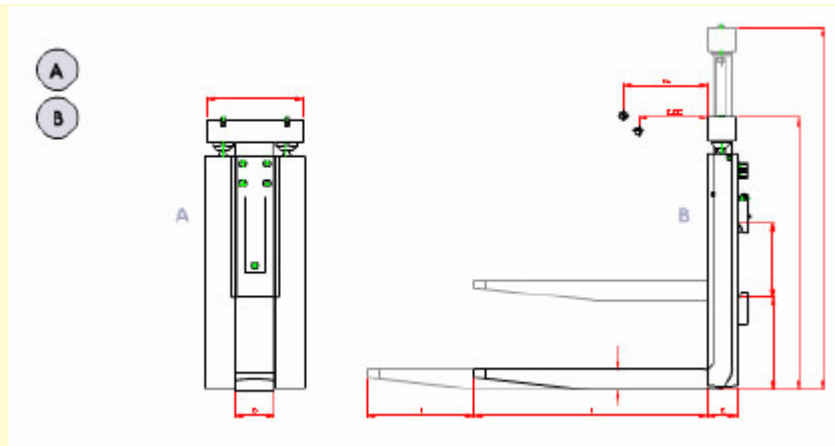


If the fork-lift truck is operating on ground that is not flat, one of the forks can compensate for the difference in height ensuring the safe loading and unloading of goods without damage. The **Single Height Shift System** is the right attachment because of its integrated cylinders. The combination of two integrated cylinders, connected on each side of the fork, makes the SHSS a very powerful vertical positioning system. Another advantage of this construction is its minimum of lost load thickness and optimal visibility.



Specifications - Single Height Shift with standard forks

[Show Inches](#)

| Type | Capacity on LC 600 mm (kg) | Stroke vertical(mm) h2-h1 | Total height extended (mm) h2 | Total width (mm) w | Fork section horizontal (mm) D*S | Fork length (mm) L | Total thickness (mm) C | Mounting FEM/ISO | Mass (kg) |
|-------------|----------------------------|---------------------------|-------------------------------|--------------------|----------------------------------|--------------------|------------------------|------------------|-----------|
| SHSSF.25.12 | 2500 | 100/100 | 1010 | 270 | 120*50 | 1200 | 75 | II | 250 |
| SHSSF.35.12 | 3500 | 100/100 | 1120 | 270 | 120*50 | 1200 | 75 | II/III | 265 |
| SHSSF.45.12 | 4500 | 100/100 | 1120 | 300 | 150*50 | 1200 | 75 | III | 320 |
| SHSSF.60.12 | 5800 | 100/100 | 1120 | 300 | 150*50 | 1200 | 75 | IV | 320 |
| SHSSF.80.12 | 8000 | 100/100 | 1200 | 340 | 200*50 | 1200 | 75 | IV | 450 |

Specifications - Single Height Shift with telescopic forks

| Type | Capacity on LC 600 mm (kg) | Stroke vertical(mm) h2-h1 | Total height extended (mm) h2 | Total width (mm) w | Fork section horizontal (mm) D*S | Fork length/stroke horizontal (mm) L/K | Total thickness (mm) C | Mounting FEM/ISO | Mass (kg) |
|-------------|----------------------------|---------------------------|-------------------------------|--------------------|----------------------------------|--|------------------------|------------------|-----------|
| SHSSR.25.14 | 2500 | 100/100 | 1015 | 290 | 170*56 | 1400/1000 | 75 | II | 280 |
| SHSSR.35.14 | 3500 | 100/100 | 1135 | 290 | 170*56 | 1400/1000 | 75 | II/II | 295 |
| SHSSR.45.14 | 4500 | 100/100 | 1125 | 290 | 170*56 | 1400/1000 | 75 | III | 360 |
| SHSSR.60.14 | 5800 | 100/100 | 1135 | 290 | 170*65 | 1400/1000 | 75 | IV | 360 |
| SHSSR.80.14 | 8000 | 100/100 | 1215 | 340 | 225*65 | 1400/1000 | 75 | IV | 500 |

Specifications - Single Height Shift with standard forks

[Back](#)

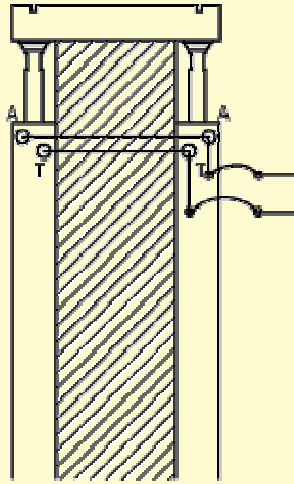
| Type | Capacity on LC 24" (Lbs) | Stroke vertical(in) h2-h1 | Total height extended (in) h2 | Total width (in) w | Fork section horizontal (in) D*S | Fork length (in) L | Total thickness (in) C | Mounting FEM/ISO | CoG1 / CoG2 (in) | Mass (Lbs) |
|-------------|--------------------------|---------------------------|-------------------------------|--------------------|----------------------------------|--------------------|------------------------|------------------|------------------|------------|
| SHSSF.25.12 | 5500 | 4"/4" | 37" | 41" | 10.7" | 4.7"x1.9"x47.2" | 2.9" | II | 8.2" | 558 |
| SHSSF.35.12 | 7700 | 4"/4" | 37" | 41" | 10.7" | 4.7"x1.9"x47.2" | 2.9" | II | 8.2" | 558 |
| SHSSF.45.12 | 9900 | 4"/4" | 37" | 41" | 10.7" | 4.7"x1.9"x47.2" | 2.9" | III | 8.0" | 576 |
| SHSSF.60.12 | 12700 | 4"/4" | 47" | 51" | 10.7" | 4.7"x1.9"x47.2" | 2.9" | IV | 7.0" | 693 |
| SHSSF.80.12 | 16900 | 4"/4" | 47" | 51" | 14.4" | 7.8"x1.9"x47.2" | 2.9" | IV | 7.6" | 1023 |

Specifications - Single Height Shift with telescopic forks

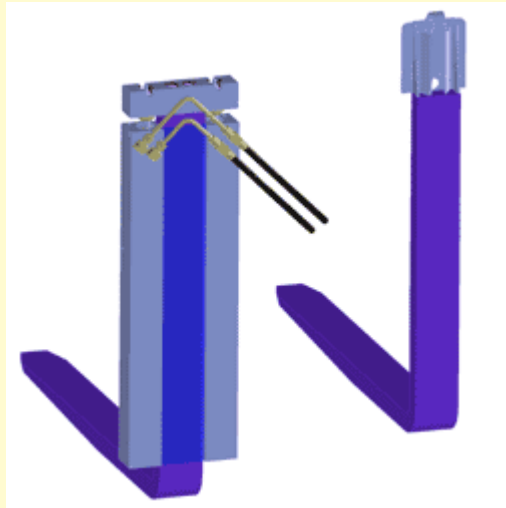
| Type | Capacity on LC 24" (Lbs) | Stroke vertical(in) h2-h1 | Total height extended (in) h2 | Total width (in) w | Fork section horizontal (in) D*S | Fork length/stroke horizontal (in) L/K | Total thickness (in) C | Mounting FEM/ISO | CoG1 / CoG2 (in) | Mass (Lbs) |
|-------------|--------------------------|---------------------------|-------------------------------|--------------------|----------------------------------|--|------------------------|------------------|------------------|------------|
| SHSSR.25.14 | 5500 | 4"/4" | 37" | 41" | 12" | 6.6"x2.2" 55.1"/39.3" | 2.9" | II | 15"/21.4" | 1678 |
| SHSSR.35.14 | 7700 | 4"/4" | 37" | 41" | 12" | 6.6"x2.2" 55.1"/39.3" | 2.9" | II | 15"/21.4" | 1678 |
| SHSSR.45.14 | 9900 | 4"/4" | 37" | 41" | 12" | 6.6"x2.2" 55.1"/39.3" | 2.9" | III | 15"/21.4" | 1694 |
| SHSSR.60.14 | 12700 | 4"/4" | 47" | 51" | 12" | 6.6"x2.2" 55.1"/39.3" | 2.9" | IV | 13.3"/19" | 2080 |
| SHSSR.80.14 | 8000 | 4"/4" | 47" | 51" | 14.4" | 8.8"x2.5" 55.1"/39.3" | 2.9" | IV | 14.3"/20.4" | 2686 |

To get optimal results with your Height Shift System you need to obey the following instructions:

- During all service work on the telescopic forks, the forklift truck should be switched off and the ignition key must be removed.
- On the identification plate of the Height Shift System are an L and R displayed. Mount the fork with the R on the right side and the fork with the L on the left side seen from the drivers position.
- On the identification plates of the telescopic forks an L or R is added. The forks should be mounted on the fork carrier corresponding left and right as viewed from the drivers seat.
- Slide the forks onto the fork carrier and make sure that the latching pin fits into the carrier recess.
- Connect the included hydraulic hose of the telescopic forks and the hoses of the forklift truck according to figure 7.2.
- Make sure that every fitting is carefully tightened and secured.
- The maximum fluid pressure of the telescopic forks is 250 bars.
- Retract telescopic forks by operating the lever. Keep the lever in the back position for about half a minute so the forks stay retracted and are flushed.
- Extend and retract the forks several times.
- Make sure the hoses are positioned free of the system and do not leak.



- Minimum operating pressure 10 MPa, maximum 20 MPa
- In cold-storage applications KOOI REACHFORKS® can be used down to - 30 degrees Celsius
- Capacities given are for normal circumstances. For information on use in extreme conditions please contact your dealer.
- Other capacities and dimensions are available on request.
- If the Single Height Shift System is used in combination with telescopic forks, two hydraulic connections will be required.
- The lift-truck manufacturer has to determine the combined Height Shift System / lift-truck capacity.
- Meijer Special Equipment bv reserves the right to modify and improve products without prior notice.
- Colour RAL 7021.
- Connection couplings are UNF JIC 9/16-18.
- One extra hydraulic valve is needed, only the SHSSR needs two hydraulic functions.
- RE are delivered incl. separate flowdivider and four hydraulic hoses.
- RG are delivered incl. one hydraulic hose.
- Minimum operating pressure 1450 PSI, maximum 2900 PSI.
- For optimal speed and minimum loss of pressure the recommended minimum hose diameter is 0.31".
- In cold-storage applications KOOI-REACHFORKS® can be used down to -22 °F.
- Capacities given are for normal circumstances. For extreme applications contact your dealer.



Thanks to its deep-bore technology Meijer Special Equipment bv is able to make all kinds of special material handling products. By using the new vertical movement systems like the Single and Double Height Shift System, the fork-lift trucks can be upgraded to become more flexible machines.