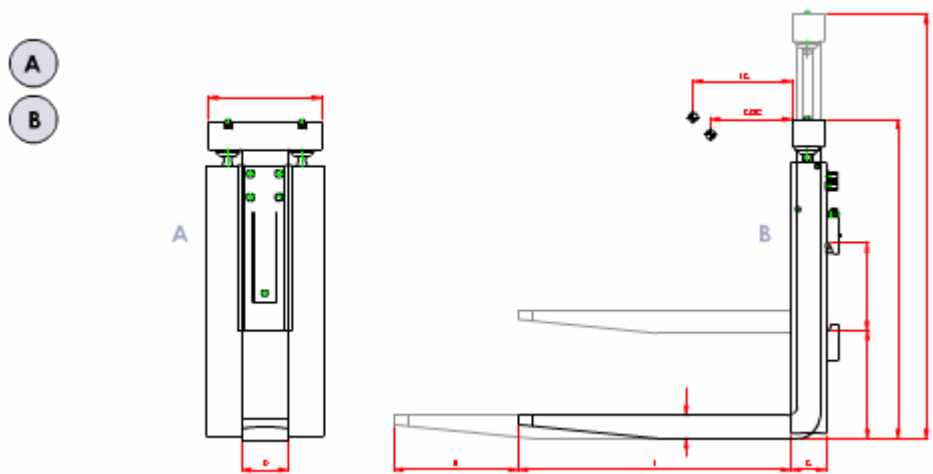


## The Double Height Shift System

(DHSS) is designed to adjust the height of a standard lift-truck mast. This is especially useful if the existing mast does not comply with the requested height. Only one extra hydraulic connection is required to mount this simple solution on your fork carrier. The cylinders are integrated on each side of the forks meaning minimal lost load thickness and maximum visibility. Another feature is the maximum lift height in combination with a certain under-door clearance. The DHSS enables lift-trucks to be enhanced with an additional telescopic boom. The same lift-truck can then handle extra pallets at a higher level without a larger load centre being required. The DHSS also contains the equaliser system.



<a href="#">Show Inches</a>										
Model	Capacity kg on LC 600 mm	Stroke vertical (mm) h2- h1	Total height retracted (mm) h1	Total height extended (mm) h2	Total width (mm) W	Section Fork length / stroke (mm) DxS L/K	Lost load thickness (mm) C	Mounting FEM / ISO	CoG1 (mm)	Mass (kg)
LDHSS.15,30	1500	300	875	1175	125	75x50x1200	77	II	256	140
LDHSS.15,50	1500	500	1075	1575	125	75x50x1200	77	II	236	154
LDHSS.15,70	1500	700	1275	1975	125	75x50x1200	77	II	220	168
CDHSS.30,30	3000	300	875	1175	165	120x40x1200	110	III	190	290
CDHSS.30,50	3000	500	1075	1575	165	120x40x1200	110	III	177	320
CDHSS.30,70	3000	700	1275	1975	165	120x40x1200	110	III	165	350

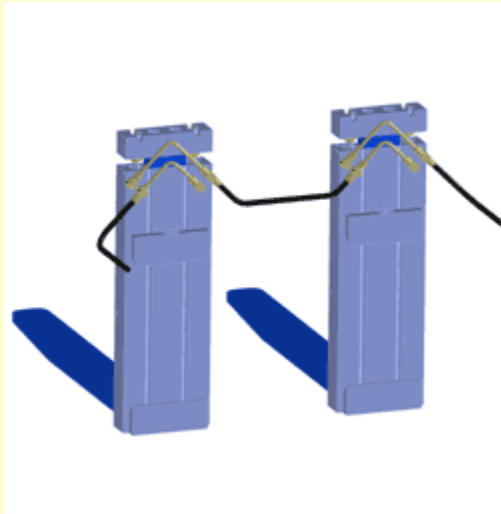
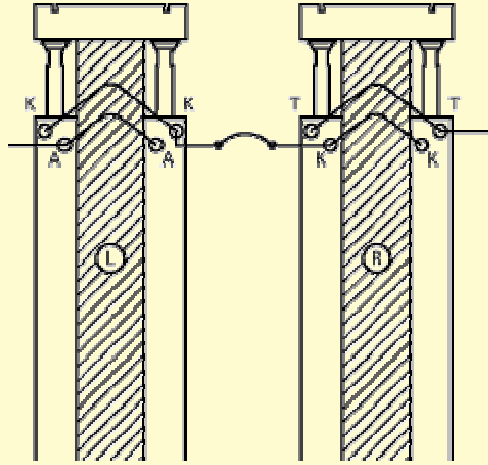
  

Model	Capacity kg on LC 24"	Stroke vertical (in) h2-h1	Total height retracted (in) h1	Total height extended (in) h2	Total width (in) W	Section Fork length / stroke (in) DxS L/K	Lost load thickness (in) C	Mounting FEM / ISO	CoG1 (in)	Mass (Lbs)
LDHSS.15,30	3300	11,8"	34,4"	46,3"	4,9"	2,9"x1,96"x47,2"	3,0"	II	10,1"	308
LDHSS.15,50	3300	19,6"	42,2"	62,0"	4,9"	2,9"x1,96"x47,2"	3,0"	II	9,3"	338
LDHSS.15,70	3300	27,5"	50,1"	77,8"	4,9"	2,9"x1,96"x47,2"	3,0"	II	8,7"	370
CDHSS.30,30	6600	11,8"	34,4"	46,3"	6,5"	4,7"x1,57" 39,3"	4,33"	III	7,5"	638
CDHSS.30,50	6600	19,6"	42,2"	62,0"	6,5"	4,7"x1,57" 39,3"	4,33"	III	6,9"	640
CDHSS.30,70	6600	27,5"	50,1"	77,8"	6,5"	4,7"x1,57" 39,3"	4,33"	III	6,5"	700

- Colour RAL 7021.
- Connection couplings are UNF JIC 9/16-18.
- One extra hydraulic valve is needed, only the SHSSR needs two hydraulic functions.
- RE are delivered incl. separate flowdivider and four hydraulic hoses
- RG are delivered incl. one hydraulic hose
- Minimum operating pressure 1450 PSI, maximum 2900 PSI.
- For optimal speed and minimum loss of pressure the recommended minimum hose diameter is 0,31".
- In cold-storage applications KOOI-REACHFORKS® can be used down to -22 °F.
- Capacities given are for normal circumstances. For extreme applications contact your dealer.

To get optimal results with your Height Shift System you need to obey the following instructions:

- During all service work on the telescopic forks, the forklift truck should be switched off and the ignition key must be removed.
- On the identification plate of the Height Shift System are an L and R displayed. Mount the fork with the R on the right side and the fork with the L on the left side seen from the drivers position.
- On the identification plates of the telescopic forks an L or R is added. The forks should be mounted on the fork carrier corresponding left and right as viewed from the drivers seat.
- Slide the forks onto the fork carrier and make sure that the latching pin fits into the carrier recess.
- Connect the included hydraulic hose of the telescopic forks and the hoses of the forklift truck according to figure 7.1.
- Make sure that every fitting is carefully tightened and secured.
- The maximum fluid pressure of the telescopic forks is 200 bars.
- Retract telescopic forks by operating the lever. Keep the lever in the back position for about half a minute so the forks stay retracted and are flushed.
- Extend and retract the forks several times.
- Make sure the hoses are positioned free of the system and do not leak.



- Capacities are nominal and based on an LC 600 mm. per pair. For information on use in extreme conditions please contact your dealer.
- Mounting the DHSS on a lift-truck is simple and requires only one hydraulic function.
- Other capacities and dimensions are available on request.
- The lift-truck manufacturer has to determine the combined Height Shift System / lift-truck capacity.
- Meijer Special Equipment bv reserves the right to modify and improve products without prior notice.

Thanks to its deep-bore technology Meijer Special Equipment bv is able to make all kinds of special material handling products. By using the new vertical movement systems like the Single and Double Height Shift System, the fork-lift trucks can be upgraded to become more flexible machines.