



## Layer picking applications have never been so easy.

### APPLICATIONS

Beverage warehouses and distribution facilities can benefit from the speed and versatility the Layer Picker offers. When building mixed-load pallets, the Cascade Layer Picker handles single layers or multiple layers of both canned and bottled product. Replace costly manual labor with the versatile Cascade Layer Picker.

### FEATURES

- Swing left, front and right side of lift truck
- Four-pad, sliding arm clamp
- Telescopic boom for accurate positioning
- Four clamp pressure settings

### ***Special Mast Developed Specifically for Layer Picking***

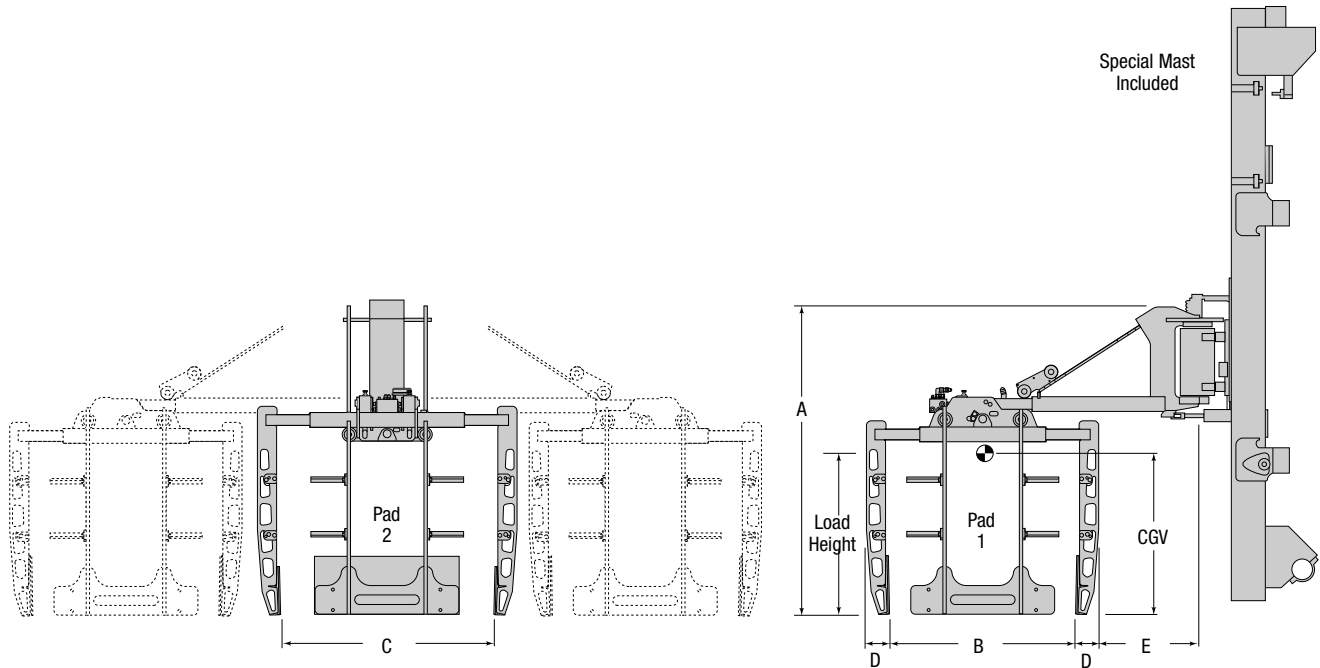
- 12 Side-Thrust Rollers in carriage
- 4 Side-Thrust Rollers in outer rail
- Additional cross members throughout mast

### OPTIONS

- Second carriage with forks
- Non-swing design (front mount)
- Built to specific load size
- Special lift heights available



*The Cascade  
Layer Picker  
adds flexibility to  
layer picking  
applications.*



Capacity Lbs. ① Load Center	Load Dimensions BxC	Catalog Order No.	Load Height Max.	Weight Including Mast (Lbs.)	Pad 1 Size	Pad 2 Size	Overall Lowered Height	Vertical Center of Gravity CGV	Overall Clamp Height A	Arm Width D	Extension E
1,200	32" x 36"	30A-LPD-B100	35"	4,160	6" x 31"	6" x 31"	113.7"	46.3"	63.7"	5.0"	20.2"
1,200	36" x 42"	30A-LPD-B200	25"	4,150	12" x 42"	6" x 30"	113.7"	33.8"	53.7"	5.0"	20.2"
1,200	36" x 36"	30A-LPD-B300	25"	4,000	12" x 31"	6" x 31"	113.7"	32.1"	53.7"	5.0"	20.2"
1,200	48" x 36"	30A-LPD-B400	25"	4,310	12" x 48"	6" x 33"	113.7"	36.2"	53.7"	5.0"	20.2"

## HYDRAULIC FLOW

Minimum	Recommended	Maximum	Maximum Pressure
5 GPM	7 GPM	10 GPM	2,300 PSI

## HYDRAULIC FUNCTIONS

	Hydraulic Functions	Truck Auxiliary Valves Required
Standard	3	2
Additional Carriage	4	3

3-function requires use of tilt valve and two additional auxiliary valves.

## NOTES

- ① Attachment capacity is a structural rating only. The type of product to be handled as well as the operating conditions must be considered to determine the working capacity for each application. Actual attachment/truck net working capacities must be obtained from the lift truck manufacturer. Only capacity ratings obtained from the lift truck manufacturer may be entered on the truck's nameplate.