



For high-cycle operations requiring a heavy duty paper roll clamp.

APPLICATIONS

Designed for mills, converters, corrugators, stevedoring, printers, warehousing and all applications requiring a rugged heavy duty paper roll clamp. The 66G is application rated for high-cycle operations handling kraft, linerboard and coated paper stocks. Will handle rolls to 7,000 lbs. for 51 and 55 inch diameters and 6,600 lbs. for 60 and 63 inch diameters.

FEATURES

Optimized Roll Handling

- High grip contact pad surface standard
- Wide variety of contact pad options for all paper types
- Fast 360° rotation
- Great visibility through arms
- Compatible with wide range of damage reduction options

Durability

- Rugged frame and arm construction
- Large diameter pivot pins and bearings
- Compatible with current lift truck hydraulic flow(s) and pressure
- Pinless contact pad mounting
- Heavy-duty rotator gear box and ring gear

Serviceability

- Check valve diagnostic port. Check valves and cylinder can be serviced without clamp disassembly
- Lifting eyes on the baseplate for easy removal and installation of the clamp
- Easy-access hydraulics

MODELS

Fixed frame/fixed short arm

- Good arm profile when handling rolls near maximum diameter

Fixed frame/positioned short arm

- Better long arm profile compared to fixed short arm over wider range of roll diameters

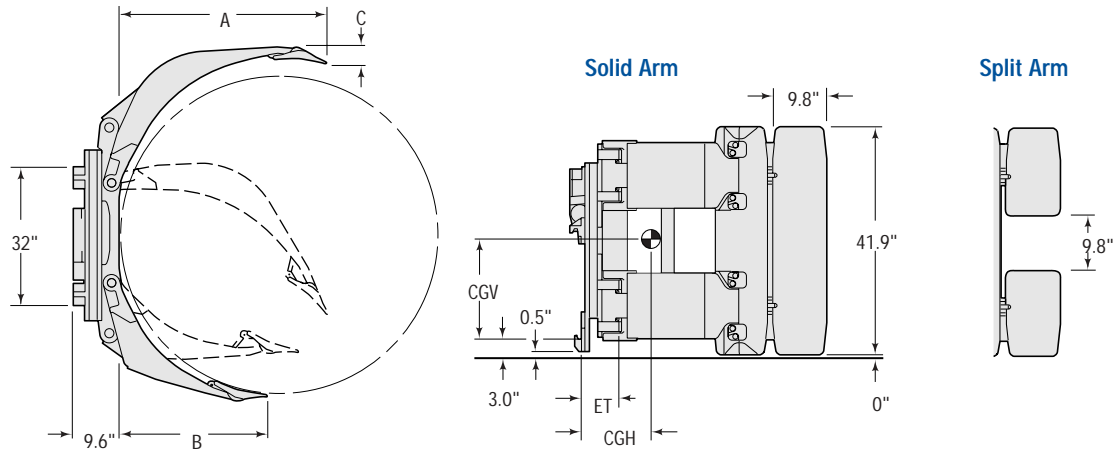
Split arm

- The two long arm sections move independently, allowing you to handle two different size rolls simultaneously
- Patented circuit that provides faster operation



A roll clamp so tough and reliable, you can count on it in the most demanding applications.

66G PAPER ROLL CLAMP



Capacity @ Diameter lbs. @ inches (kg @ mm)	Roll Range	Short Arm Type	Catalog Order No.	Mounting Class ①	Mounting Angle ②	Weight lbs. (kg)	Effective Thickness ET	Horizontal Center of Gravity CGH	Vertical Center of Gravity CGV	Long Arm Length A	Short Arm Length B	Long Arm Thickness C
Solid Arm												
7,000 @ 51" (3,200 @ 1300)	20"-51"	Fixed	66G-RCF-B002	III	2°	1,826 (830)	7.5"	10.7"	17.6"	33.5"	23.3"	3.4"
7,000 @ 51" (3,200 @ 1300)	10"-51"	Positioned	66G-RCP-B001	III	2°	1,854 (840)	7.5"	10.6"	17.6"	33.5"	23.3"	3.4"
7,000 @ 55" (3,200 @ 1395)	22"-55"	Fixed	66G-RCF-B008	III	2°	1,912 (870)	7.5"	11.1"	17.6"	35.9"	25.1"	3.2"
7,000 @ 55" (3,200 @ 1395)	10"-55"	Positioned	66G-RCP-B007	III	2°	1,928 (875)	7.5"	11.1"	17.6"	35.9"	25.1"	3.2"
6,600 @ 60" (3,000 @ 1525)	22"-60"	Fixed	66G-RCF-B004	III	2°	1,987 (900)	7.5"	11.9"	17.6"	38.6"	27.3"	2.6"
6,600 @ 60" (3,000 @ 1525)	10"-60"	Positioned	66G-RCP-B003	III	2°	2,017 (915)	7.5"	11.9"	17.6"	38.6"	27.3"	2.6"
6,600 @ 63" (3,000 @ 1600)	22"-63"	Fixed	66G-RCF-B010	III	2°	2,087 (950)	7.5"	12.3"	17.6"	40.3"	28.6"	3.0"
6,600 @ 63" (3,000 @ 1600)	10"-63"	Positioned	66G-RCP-B009	III	2°	2,115 (960)	7.5"	12.2"	17.6"	40.3"	28.6"	3.0"
5,500 @ 72" (2,500 @ 1830)	27"-72"	Fixed	66G-RCF-B006	III	2°	2,217 (1,005)	7.5"	13.4"	17.6"	45.0"	32.6"	3.5"
5,500 @ 72" (2,500 @ 1830)	15"-72"	Positioned	66G-RCP-B005	III	2°	2,241 (1,015)	7.5"	13.3"	17.6"	45.0"	32.6"	3.5"
Split Arm												
7,000 @ 51" (3,200 @ 1300)	20"-51"	Fixed	66G-RDF-B002	III	2°	1,781 (810)	7.5"	9.9"	17.6"	33.5"	23.3"	3.4"
7,000 @ 51" (3,200 @ 1300)	10"-51"	Positioned	66G-RDP-B001	III	2°	1,809 (820)	7.5"	9.9"	17.6"	33.5"	23.3"	3.4"
7,000 @ 55" (3,200 @ 1395)	22"-55"	Fixed	66G-RDF-B008	III	2°	1,869 (850)	7.5"	10.4"	17.6"	35.9"	25.1"	3.2"
7,000 @ 55" (3,200 @ 1395)	10"-55"	Positioned	66G-RDP-B007	III	2°	1,899 (860)	7.5"	10.4"	17.6"	35.9"	25.1"	3.2"
6,600 @ 60" (3,000 @ 1525)	22"-60"	Fixed	66G-RDF-B004	III	2°	1,972 (895)	7.5"	10.0"	17.6"	38.6"	27.3"	2.5"
6,600 @ 60" (3,000 @ 1525)	10"-60"	Positioned	66G-RDP-B003	III	2°	2,002 (910)	7.5"	10.0"	17.6"	38.6"	27.3"	2.5"
6,600 @ 63" (3,000 @ 1600)	22"-63"	Fixed	66G-RDF-B010	III	2°	2,051 (930)	7.5"	11.5"	17.6"	40.3"	28.6"	3.0"
6,600 @ 63" (3,000 @ 1600)	10"-63"	Positioned	66G-RDP-B009	III	2°	2,079 (945)	7.5"	11.4"	17.6"	40.3"	28.6"	3.0"
5,500 @ 72" (2,500 @ 1830)	27"-72"	Fixed	66G-RDF-B006	III	2°	2,185 (990)	7.5"	12.7"	17.6"	45.0"	32.6"	3.5"
5,500 @ 72" (2,500 @ 1830)	15"-72"	Positioned	66G-RDP-B005	III	2°	2,209 (1,005)	7.5"	12.6"	17.6"	45.0"	32.6"	3.5"

- ① Class IV mounting available. Consult Cascade for specifications and pricing.
- ② 2° mounting provides a combination of reduced effective thickness, easy bilge handling and improved high stacking capability (up to 268"). 0° mounting must be used when stacking above 268".

► Cascade cast pad is standard.

INSTALLATION KIT

Clamp Type	Catalog Order No.
Fixed Frame	212904

HYDRAULIC FLOW

Minimum	Recommended	Maximum	Maximum Pressure
5 GPM	10 GPM	15 GPM	2,600 PSI/180 bar

HYDRAULIC FUNCTIONS

Model	Hydraulic Functions	Truck Auxiliary Valves Required
Fixed Short Arm	2	2
Positioned Short Arm	2	2

ROTATOR SPECIFICATIONS

Rotator Speed	Rotator Torque
7 RPM @15 GPM	70,000 inch-lbs. @2,600 PSI